



**NOVEMBER 2023**

October 2023	Gas Rate \$ 2.59/GJ
November 2023	Gas Rate \$ 2.89/GJ

## **CARBON MONOXIDE SAFETY**

Carbon monoxide (CO) is produced whenever you burn fuel like coal, gasoline, natural gas, oil, propane and wood or wood pellets. It is lighter than air and can move freely throughout your home at any time of year. The risk of CO is higher in the winter months because most homes in Canada are heated by furnaces, wood or pellet stoves, water heaters or boilers or other appliances running on burning fuels.

Other sources of carbon monoxide include; gas-powered generators, charcoal grills, vehicle exhaust, gas-powered cooking appliances, blocked chimney flues and gas-powered dryers.

**It is a gas that causes illness and can lead to death. It has no smell, taste or colour.**

### **Symptoms of Carbon Monoxide Poisoning**

Breathing CO reduces your body's ability to carry oxygen in your blood and can affect you before you notice its presence. Exposure to the gas can cause carbon monoxide poisoning (CO poisoning) and is dangerous to your health.

Symptoms of CO exposure will vary, depending on the concentration and duration of exposure, and should never be ignored:

Mild: Headaches, dizziness, clumsiness, or "flu like" symptoms.

Severe: Vomiting, confusion, visual problems, irregular heartbeat, weakness, or collapse. Extreme: Unconsciousness, convulsions, or heart and lung failure resulting in death.

**Recommended Preventative Actions:** Natural gas or portable propane heaters or petroleum gas generators are not to be used indoors. Vehicles must not be left running inside enclosed shops/garages, near air intake systems or adjacent building windows. Install CO detectors in mechanical/furnace rooms, basements and various locations throughout your home to allow for notification and give you time to make it out safely. Have your gas appliances checked by certified technicians before the winter months. Cleaning vents, filters and screens can also help reduce the buildup of CO. Ensure that as snow builds up along buildings, the gas meter is not buried. Make sure there is a constant flow of fresh air into furnace rooms and keep the area around each appliance clear and free of debris.

If you suspect CO in your home, we recommend that you call 911 and Meota Gas 24/7 Service Technician. While Meota staff are not equipped to respond to emergencies, we can ensure our meters and gas supply to your home are not showing any leaks and functioning properly.

**\*\* REMEMBER TO CHANGE THE BATTERIES IN YOUR CO DETECTOR – OR REPLACE THOSE THAT HAVE AN EXPIRATION DATE. KEEP YOUR FAMILY SAFE.**

---

## **METER EXCHANGES**

Due to the delay of supply chain, our meters change program started in September, but will continue on over the next two months. Measurement Canada requires gas distributors to change our meters at specific intervals. This reverification ensures that your gas meter is tested for accuracy in measurement.

If your meter is due for exchange this year, we will contact you to set up an appointment for change out. The exchange means that gas service will be interrupted at your home. Once the meter is changed out, we will relight any of your natural gas appliances as needed and will need access to these appliances.

## NGTL WEST PATH DELIVERY

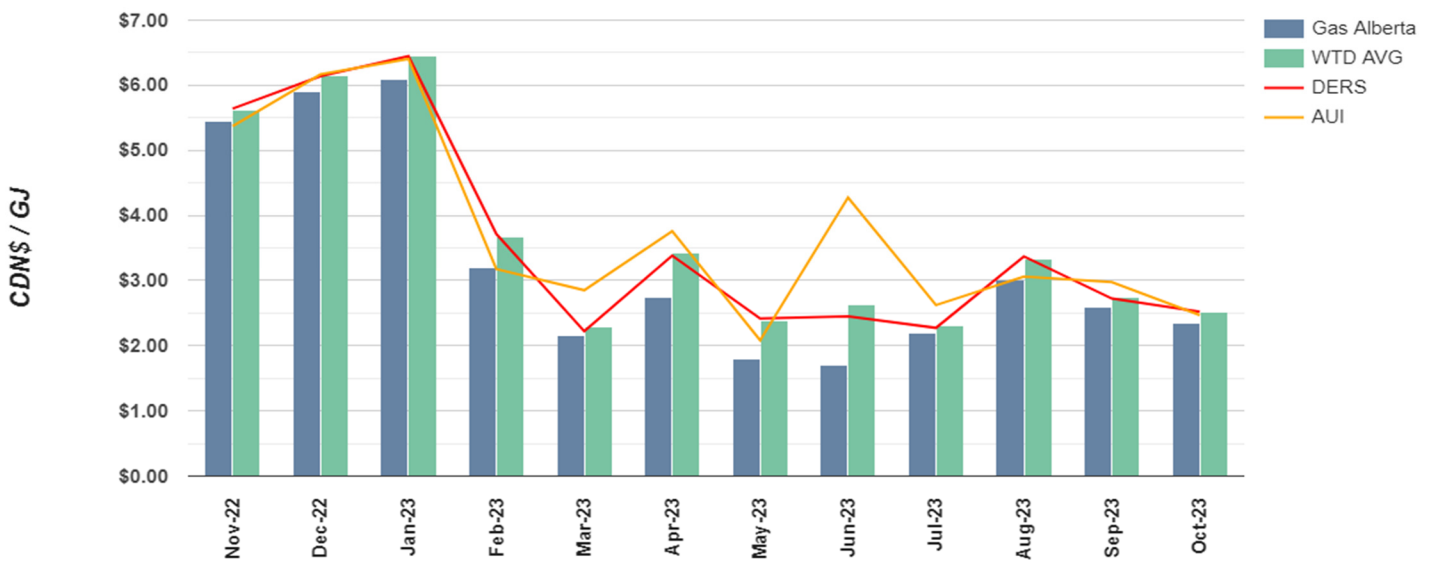
Nova Gas Transmission Ltd. (TC Energy) is nearing completion of the 48” pipe installation through the Meota franchise area. This project involved 23 km of a new 48” diameter pipeline installation from our northern franchise boundary to Turner Valley. The project is anticipated to be complete by the end of 2023.

Meota staff have completed a number of line moves to accommodate this project and required the equivalent of a full time staff member overseeing this project for the majority of the 2023 calendar year. Meota is proud to report that this project did not incur any safety deficiencies nor property damage incidents but did result in Meota system improvements due to line move requirements that were fully funded by NGTL.

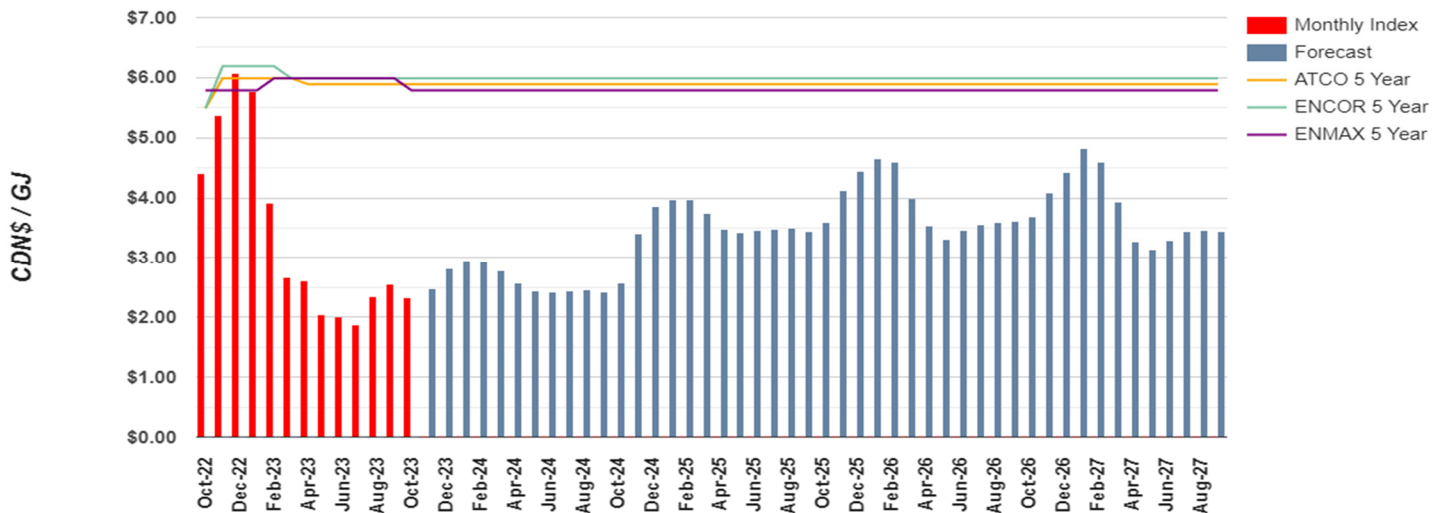
Thank you to those land owners affected in allowing us to move and upgrade our lines.

## NATURAL GAS COST COMPARISON – GAS ALBERTA VS REGULATED RETAILER RATES

WTD – Weighted Average DERS – Direct Energy Regulated Services AUI – Apex Utilities Inc. (FORMERLY ALTA GAS)



## Natural Gas Retailer Rates in Alberta



Disclaimer: All information provided is deemed reliable, but is not guaranteed and should be independently verified. Source: [www.gasalberta.com/gas-market/gas-rates-in-alberta](http://www.gasalberta.com/gas-market/gas-rates-in-alberta)