



**MARCH 2026**

February 2026	Gas Rate \$ 2.62/GJ
March 2026	Gas Rate \$ 2.02/GJ

## **BOARD – CALL FOR NOMINATIONS – CLOSES MARCH 20, 2026**

**Meota will be holding their 2026 AGM on Wednesday, April 15, 2026**

Formal Notice along with the meeting material package for the 2026 AGM will be sent to those members interested (by request) via electronic means (email) or via Canada Post (if requested) in early April.

Nominations for election to the Board of Directors will open on **Wednesday, February 18, 2026**, in accordance with the requirements set forth in the By-Laws. Also accordingly, nominations close at 4:00 pm on **Friday, March 20, 2026**.

---

## **CONSTRUCTION STARTS**

We are now open to discuss and plan your 2026 construction projects! If you are planning any improvements on your property that may come into conflict with Meota's gas line infrastructure, please contact our office as soon as possible. This also includes fencing and tree planting.

We anticipate a busy construction season in 2026!

Construction projects require planning, engineering and approvals, and can take time to execute.

Please also remember to always contact Utility Safety Partners (formerly Alberta One Call) to book any line locate requests to assist in planning and to ensure everyone's safety!

Applications for construction must be received by October 1 to ensure completion by October 31 in a typical year. Construction completions are based on site readiness, payment and works within our construction months of April to October. Any winter construction may incur additional costs.

---

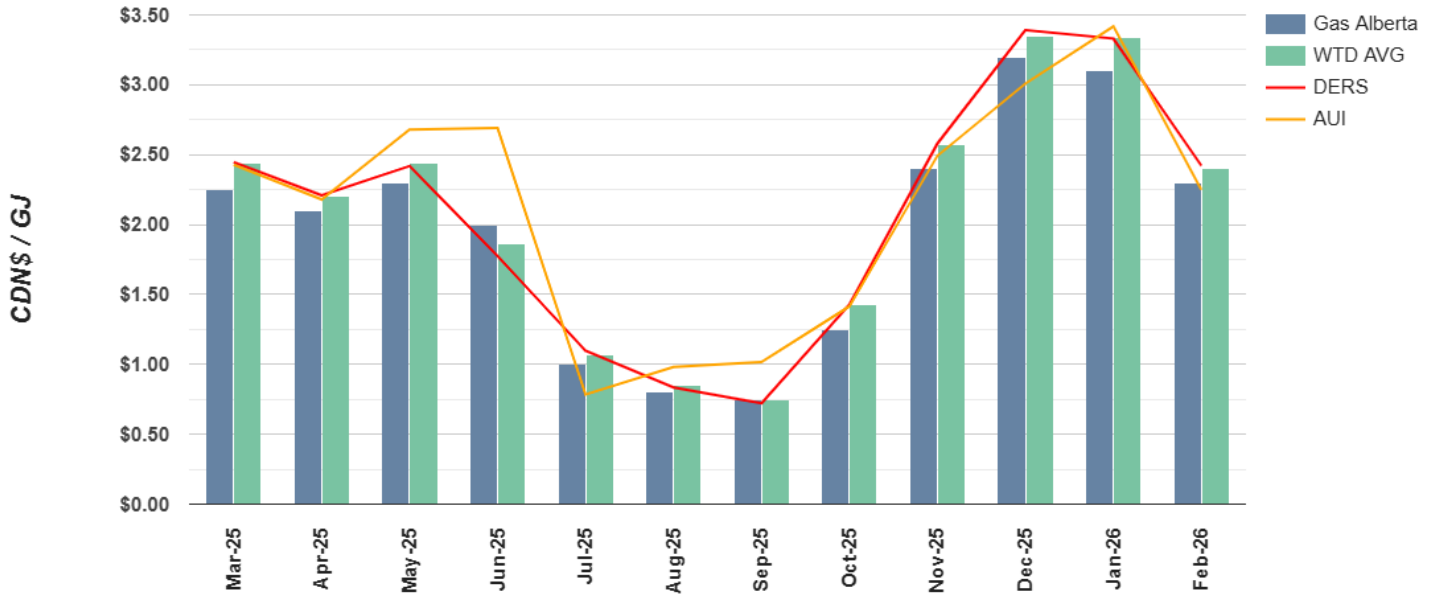
## **NATURAL GAS PRICING – MARKET PRICES**

Natural gas rates for Alberta's consumers are based on gas prices established through the Natural Gas Exchange (ICE NGX) electronic trading platform. The ICE NGX platform brings together sellers who "offer" natural gas for sale and buyers who "bid" for natural gas purchases. Contract terms may be for the day, the weekend, rest of month or future months' deliveries. The trading platform is very liquid and typically sells over twice the amount of natural gas that is actually being produced in Alberta every day.

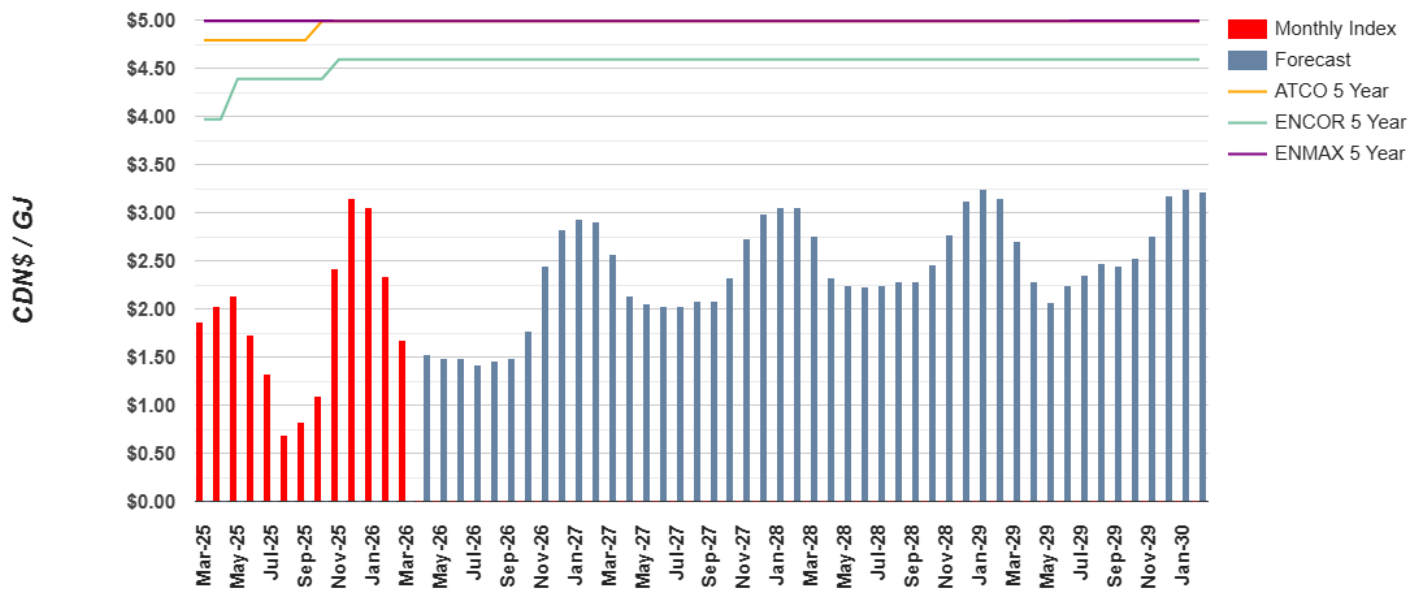
---

# Alberta Natural Gas Prices – Current Month

## Gas Alberta Inc. vs Regulated Retailer Rates



## Natural Gas Retailer Rates in Alberta



Actual prices are based on a volume weighted average of transacted prices for all physically delivered natural gas at the Alberta AB-NIT market center. Disclaimer: All information provided is deemed reliable, but is not guaranteed and should be independently verified. Source: [www.gasalberta.com/gas-market/gas-rates-in-alberta](http://www.gasalberta.com/gas-market/gas-rates-in-alberta).

**If you smell gas inside or outside, or hit a gas line, contact us immediately.**

#### DEFINITIONS

**Fixed Charge** – The monthly flat rate charged to recover a portion of the total operating costs.

**Cost of Gas** – The cost of natural gas charged to Meota Gas Co-op from its wholesaler, GasAlberta. Meota does not benefit from any increase or decrease in the rate charged per gigajoule (GJ) of natural gas. Meota operates as a not-for-profit cooperative.

**Delivery Charge** – This charge is generated to cover the costs of delivering natural gas to Meota's customers/members and the costs for operating the cooperative. This fee is charged on the number of GJ's consumed.

**Gas Loss Charge** – This is a 'shrinkage' charge that is due to the loss, consumption or unaccounted-for volume of gas within the distribution system. Shrinkage is encountered through unavoidable leakage, metering errors or unidentified theft. Minor variances occur due to the application of regulations for calculating the thermal energy of gas delivered.

**Monthly Fixed Charge** – This is the monthly flat rate charged to recover a portion of the total operating costs.

#### PAYMENT OPTIONS

**Cheque** – by mail or deliver to office. An after-hours mailbox is available.

**On Line** – Find Meota Gas Co-op as a payee. When referencing your account number, your financial institution may require more than your 4-digit account number. If so, please add zeros before or after your account number. (ie. 0004567 or 45670000)

**E-Transfer** – payments may be e-transferred to [admin@meotagas.com](mailto:admin@meotagas.com). Please reference your account number in the notes. \*Note: Meota Gas is set up for auto-deposit for e-transfers.

**Auto Debit** – Auto Debit payments are Meota's preferred method. Payments will be processed on the billing due date. If you wish to sign up for Auto Debit, kindly contact our office.

**At your Bank** – most financial institutions can process in-person payments.

**Payment Terms** - A late payment of 2% will apply on amounts outstanding after the due date. An NSF Charge will be assessed for dishonoured payments.



Alberta One Call is now called Utility Safety Partners

**Any ground disturbance on your property requires locates booked through Utility Safety Partners. Landscaping, new fencing or decks, or even planting a garden is ground disturbance and can cause damage to a buried utility. Some utilities are buried only centimeters below the surface.**

The results of a contact with a buried utility can be loss of an essential service for you or your neighbours, costly repairs, and most importantly serious injury or death.